

Phase Two Overview

Central Core:

- Fitting out of new changing rooms and disabled WC's (1st, 2nd mezz. & 3rd floor)
- New signage & way finding graphics (subject to review during detail design)

Building Services:

- Implementation of mechanical services strategy :
- Infrastructure East
- Infrastructure West

East Basement:

- New meeting rooms, multi-purpose spaces, relocation of International Enrichment,
- new IT Hub Room

2nd Floor:

- new ICT room, store, box office (East)
- remedial works flat store (East)

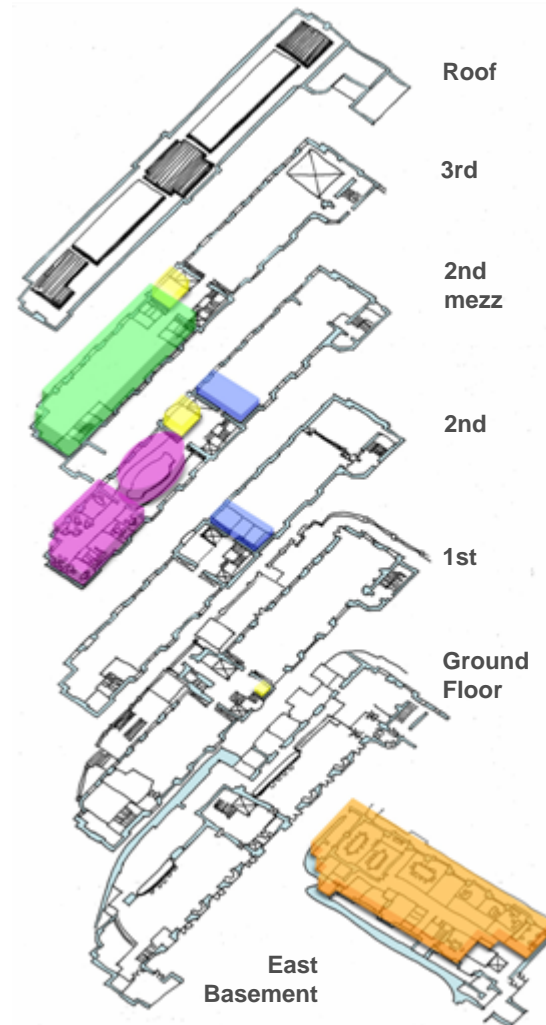
2nd Mezz. Floor :

- New accommodation for student activity centre and voluntary services
- Reconfiguration of projection room with new lighting gantry

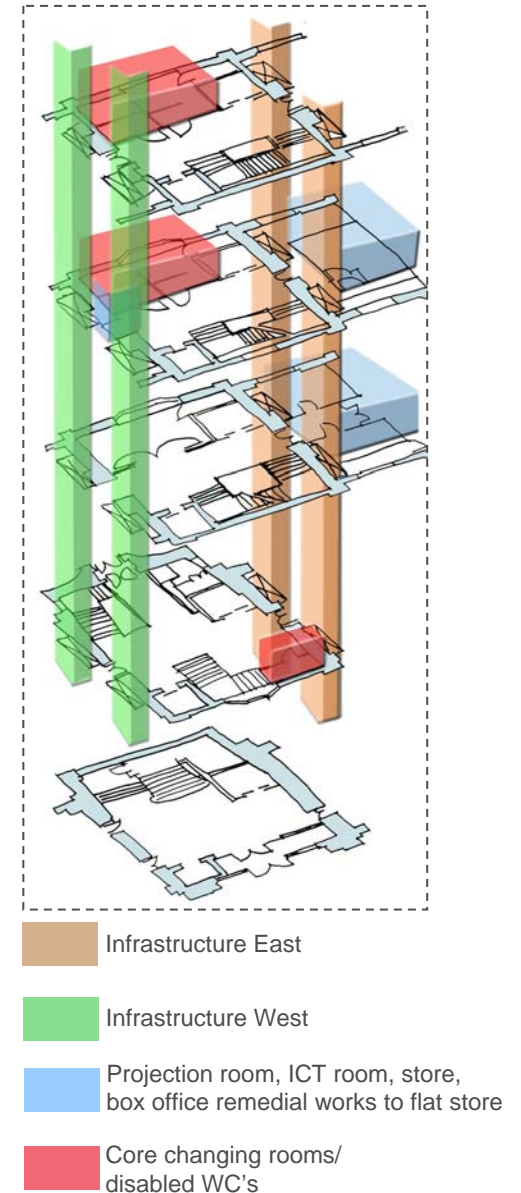
3rd Floor:

- New multi-purpose Space / Gym relocated from 2nd floor with storage and WC facilities

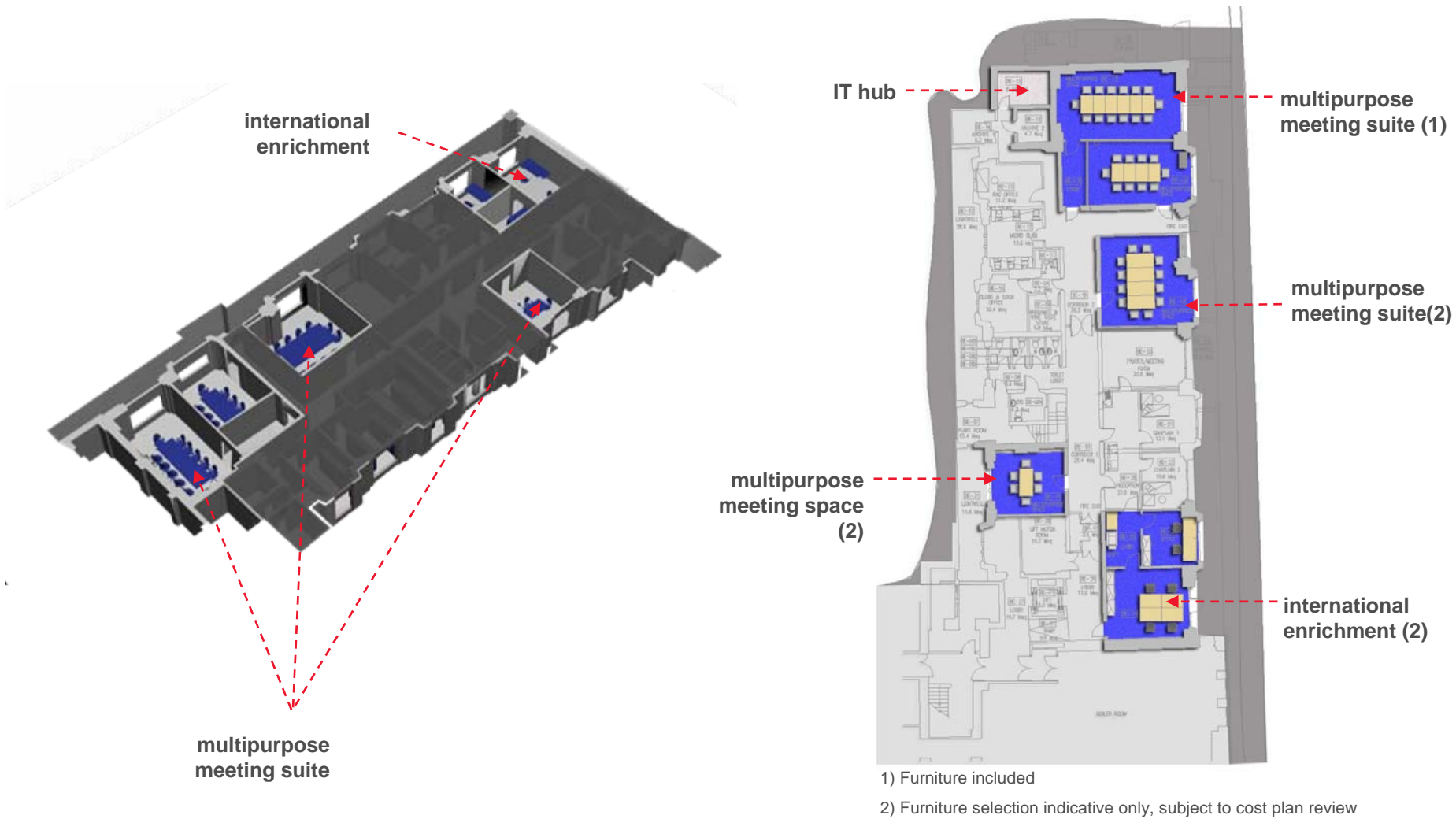
Overview stack



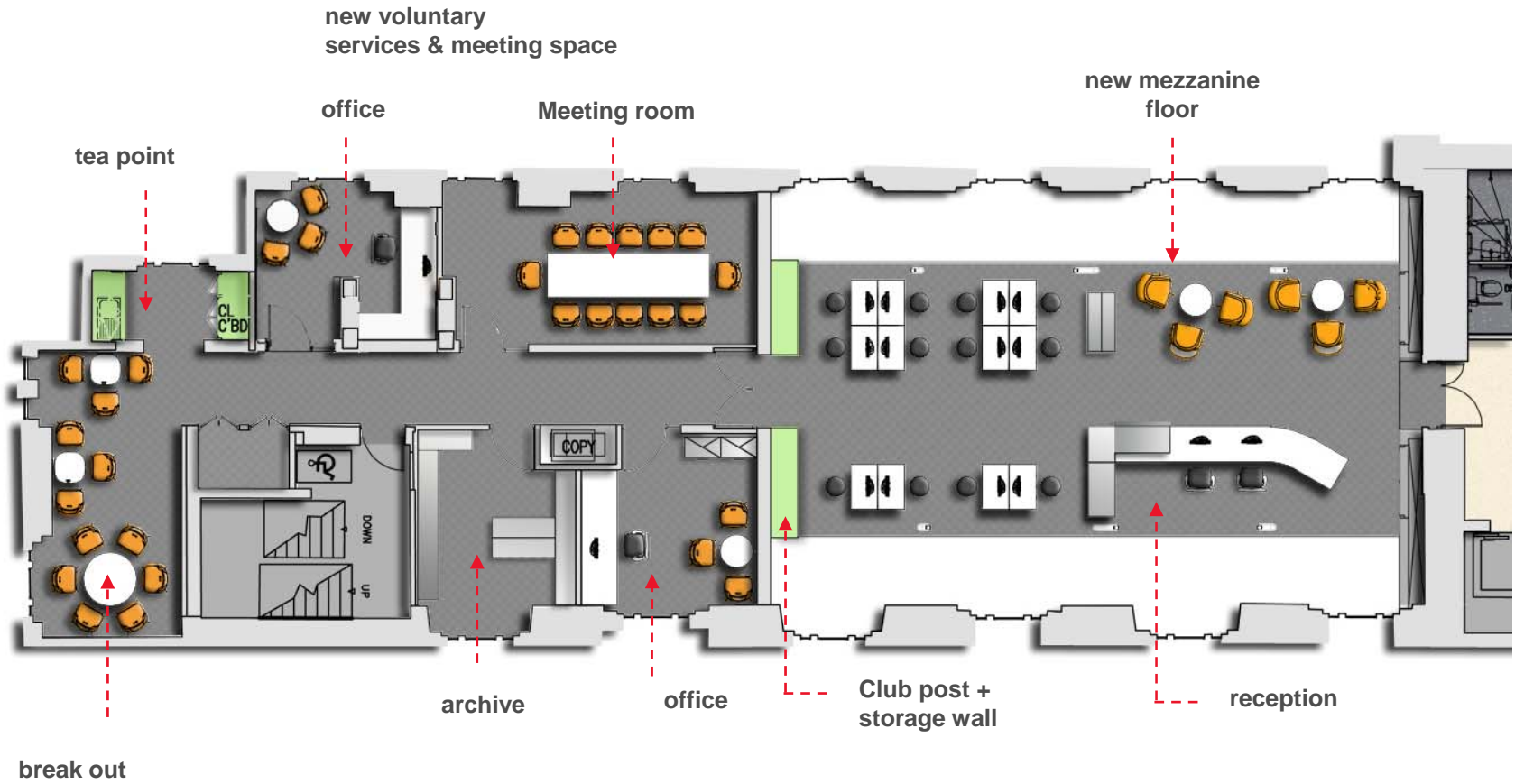
Core stack



East Basement



2nd Mezzanine Level: Student Activity Centre







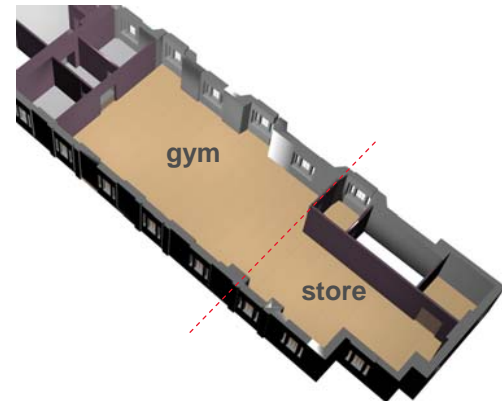
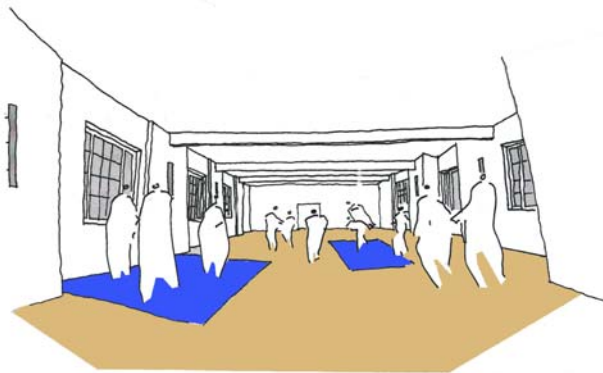
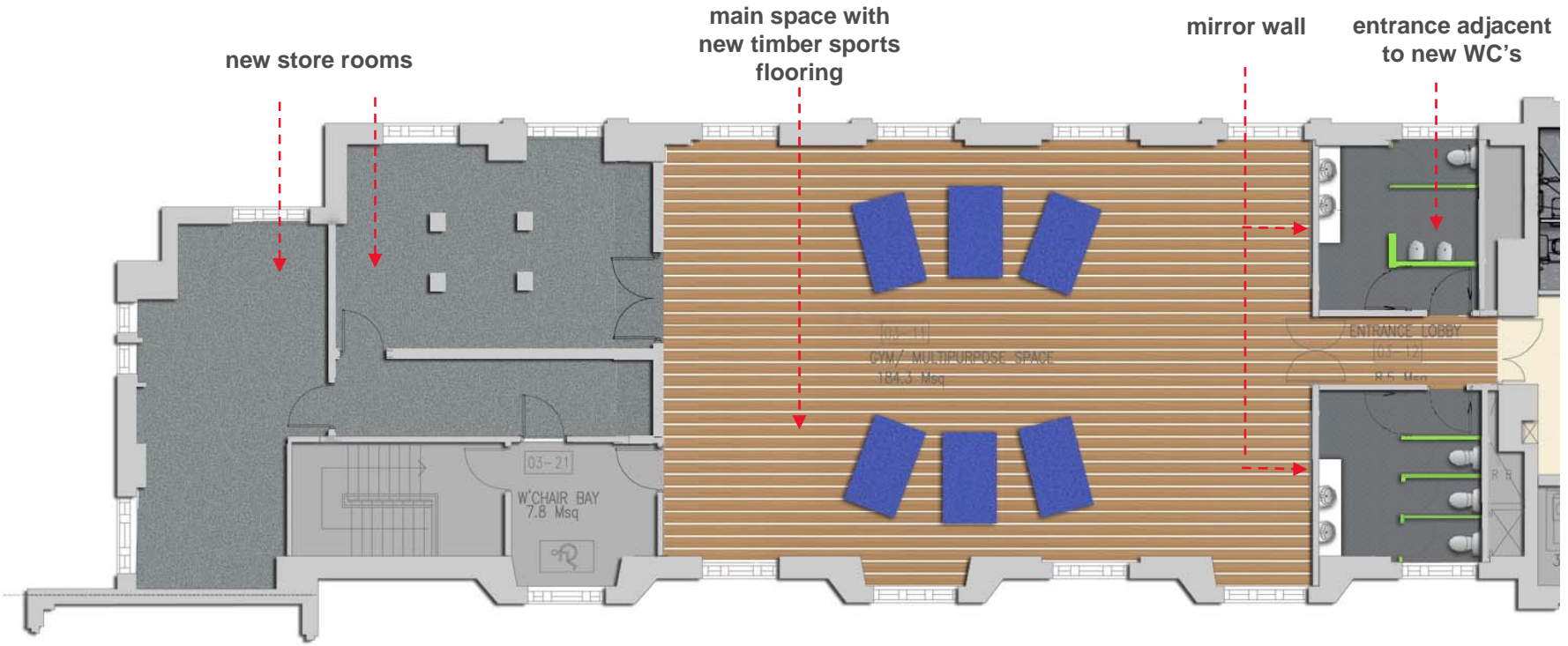








3rd Floor Gym / Multipurpose Space



Furniture Selection



student activity area + break out

offices



meeting suite



lighting

