

Council
15 January 2013

Imperial College Union
Council Report
By Henry Whittaker, Deputy President (Clubs & Societies)

Storage

I have ordered shelving and lockers for a new store room on level one, the gym store room and the East Basement. This should be arriving within the next week or so with the shelves being constructed in level one shortly after and the new space allocated to student groups who have applied.

The gym store room is being cleared out later on in the term at which time the shelving will go in and be correctly marked and labeled to prevent overuse of space.

Last term I cleared out storeroom A in the east basement to remove items that no longer belonged to clubs. This created an extra shelf of storage space and made the room much tidier and easier to access. I hope to continue this success with the remaining shared storerooms by working through those in the East Basement.

Basement Redevelopment

The College has started a feasibility study that will be looking at creating more bedrooms in Beit Hall in the East Basement. Redistribution of some club spaces may happen if this were to go ahead and this gives us the opportunity to access funding to renovate and vastly improve the facilities in the building as well as creating new spaces.

All groups involved were invited to a brief chat on Friday 11 January 13.00-14.00 in the Union Concert Hall. This was to be the beginning of an extensive consultation on the potential redevelopment of both basement areas and some parts of the 3rd floor. Nothing has been decided yet and that's why we are opening numerous channels to get the student input and need necessary to drive this study and potential and beneficial development.

Clubs and Societies Budgeting

The budgeting process for clubs and societies is the process by which Grant, money given to clubs for a specific use, is allocated to student groups. This process opened at the beginning of term and will remain open for a month to allow clubs to submit their budget. The focus this year will be on encouraging clubs to submit reasonable and sensible budgets.

There will be a meeting before the main budgeting meeting where unreasonable budgets will be highlighted and penalised and any major issues addressed. The main budgeting meeting contains all the members of the Clubs and Societies board plus treasurers and is when decision are made on how the Clubs and Societies funding pot is divided.

I have updated the budgeting guideline to include information on how to calculate a Grant request including equipment costs. The Deputy President (Finance & Services) and myself will be providing training to management groups in the second week of term to cover advice to student groups and how to evaluate budgets.

Grant & SGI review

I have started investigating feedback into a change in how clubs Grant and SGI (Self Generated income) are used and accessed. This change would leave to clubs accounts being split into Core activities and SGI. The Core Activity code would contain all income and expenditure relating to the clubs core activity and their Grant allocation as an income. This would give a clearer picture on how club money is being used and remove problems with grant under or overspend.

New eActivities features

Some new features have been created for eActivities and I have been working on updating the training to include these new features.

Auto zeroing activities: Activity codes are used for clubs to separate their expenditure. They are usually created for specific events or trips. This new feature will mean that any balance remaining in an activity code will be moved into general.

Charitable donations: This new form allows clubs to make a charitable donation to a charity by submitting details on the charity and the amount they wish to donate. This will be useful for groups involved with RAG who previously had a lengthy paper based process.

Members funds redistribution: This allows money to be moved between activity codes. This is useful for groups who wish to manually balance their activity codes

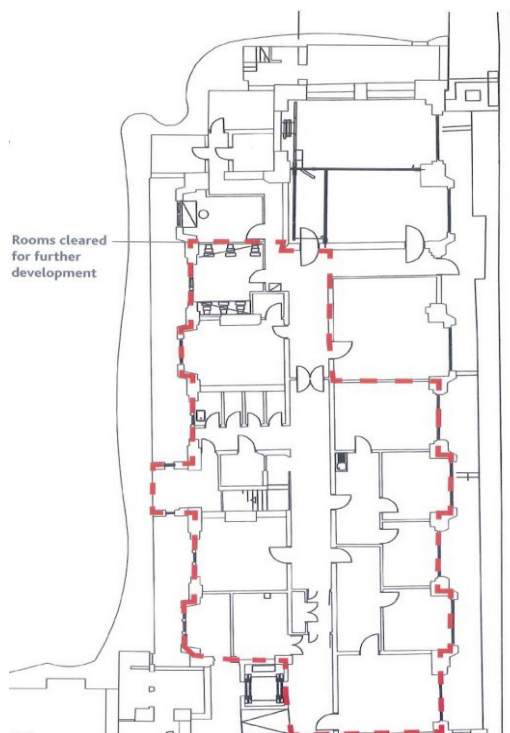
New Projects Committee

A new project committee was held last term however none of the applicants attended the meeting. Both applications were rejected by the committee with a recommendation that "Bringing Research to Life" should continue to work with MedSin and "Youth Arm Sylvia Wright (IC)" should add more detail into their application before it can be reconsidered.

Leave

I took one week of leave to go skiing during 16-23 December.

Appendix



The area for the scheme in the east basement can be seen by the red dashed line.